

# Customer Service Information



Savio Engineering, Inc.  
8 Water Garden Way  
Santa Fe, NM 87508 USA  
<http://www.savio.cc> • email: [support@savio.cc](mailto:support@savio.cc)

## Innovative, precision engineered solutions

Advanced water gardening products for healthy, clean living ponds.



Skimmerfilters™



Livingponds Filters™



Pond Packages



Ultraviolet Clarifiers



Water Master Pumps™



Automated Water Level Sensor™



Springflo Bio Filter Media™



Greenex® Micro Granules



Aqua Flex PVC™



Black Foam



Water Treatments



K1001

# Mid Water Intake Kit

for use with the Savio Skimmerfilter™

## Operating Manual & Installation Guide

Read entire instructions prior to assembly and operating.



# Operating Capacities

The mid water intake kit is designed for use with the SAVIO Skimmerfilter.™ The kit can be used for a variety of applications.

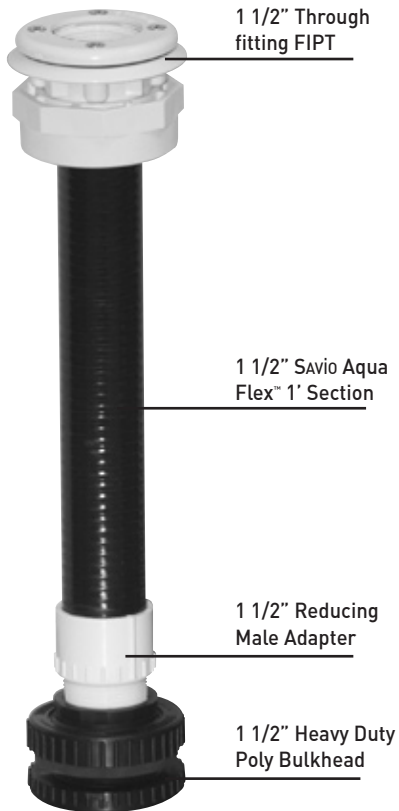
**WINTERIZING:** draw water from below the surface in freezing conditions.

**PUMP PROTECTION:** prevent pump burnout in low water conditions

**BOTTOM DRAIN:** draw water off the bottom of the pond for increased circulation

## Components:

- 1 1/2" Male Adapter (2)
- 1 1/2" Poly Bulkhead
- 1 1/2" Through Fitting FIPT
- 1 1/2" Aqua Flex PVC



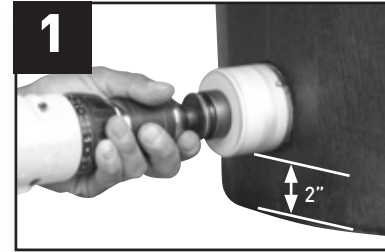
The Mid Water Intake Kit provides an alternative means of drawing water into the Skimmerfilter and offers the benefit of low water pump protection.

**K1001**

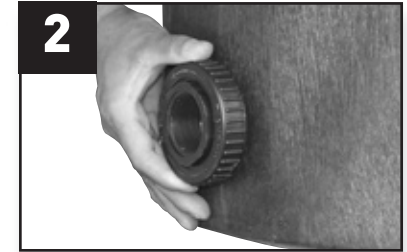
## Tools needed:

- Teflon Tape or Pipe Thread
- Purple Primer
- Wet Weld Glue
- Drill
- Channel Locks
- 2-5/8" Hole Saw

# Assembly and Installation



Drill a 2-5/8" hole 2" distance from the bottom of Skimmerfilter.™



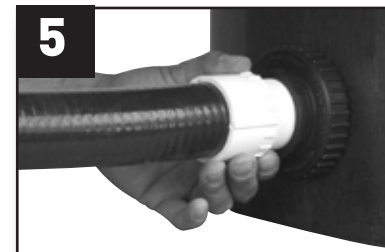
Attach bulkhead with locknut on the outside of Skimmerfilter.™. Tighten with channel locks.



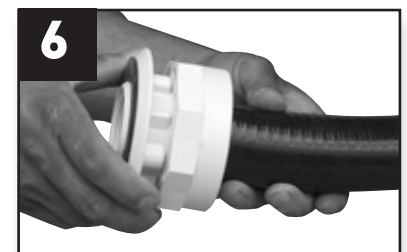
Apply teflon tape to outside thread of male adapter and attach to bulkhead.



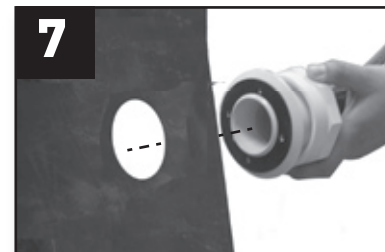
Cut PVC section to size, then prime and glue male adapter.



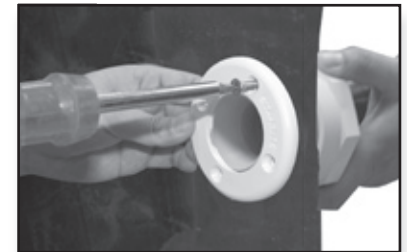
Insert flexible PVC into male adapter.



Prime and glue through fitting, and attach to the other end of PVC.



Cut hole in liner to size of through fitting opening.



Screw plate onto fitting to create a watertight seal.