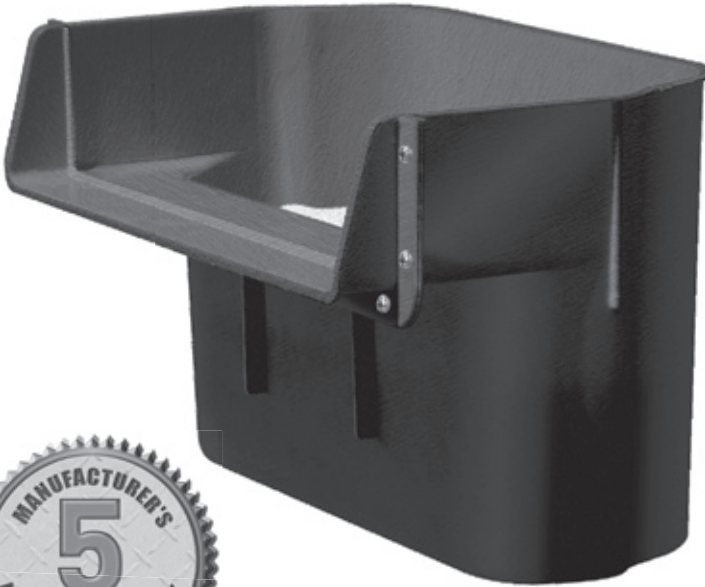


# **SAVIO Waterfall Weir™**

## **Operating Manual & Specifications**

Read entire instructions prior to installing the unit.



**Great Equipment Is Just Part Of The SAVIO Excellence Line.**

SAVIO manufactures a full assortment of products for healthy Livingponds.™ When you want to build it right the first time, think SAVIO. For the full line of SAVIO products visit [www.savio.cc](http://www.savio.cc)

# Operating Capacities

The SAVIO Waterfall Weir™ allows you to quickly and easily add a dramatic waterfall to any pond. Recommended pump flow 600 gph - 1500 gph.

## Components:

- waterfall weir
- filter mat
- mesh bag
- compression seal
- 12-tack screws



warranty card

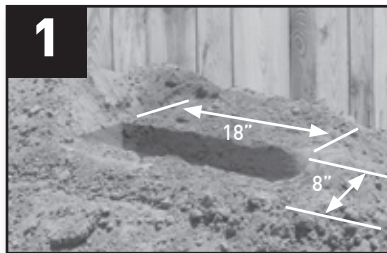


operating manual

## Tools needed:

- #2 phillips screwdriver
- small stones
- rigid or flexible PVC tubing
- PVC glue

# Assembly and Installation



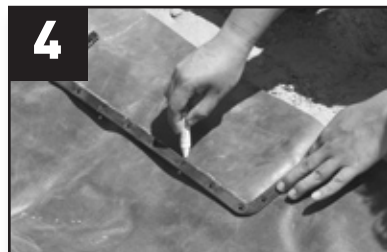
Prepare a hole for placement of the waterfall unit 8" by 18". Dig the hole 6" deep. Compact the soil to prevent unwanted settling.



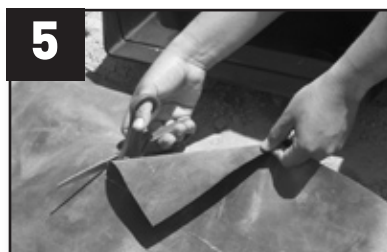
Place the waterfall weir into the hole and level front to back and side to side. Tip the unit forward (toward the pond)  $\frac{1}{4}$ ".



Backfill around the unit using pea gravel or soil that is free from clumps. Hand pack every 2-3 inches.



Use inner portion of the liner attachment bracket as a template and white chalk to draw the weir cutaway on the liner.



Cut liner to shape of template mark with scissors or a knife.



Attach liner bracket and liner to waterfall weir by installing 4 tack screws **halfway** into each corner. (Front of seal has recessed screw holes.)

# Assembly and Installation

---



Add the remaining screws, then tighten alternately, **by hand** until all screw heads are flush with the bracket.



Connect the Waterfall Weir™ to your pump or water return using flexible PVC or rigid PVC and glue. If using smaller diameter PVC, first glue a reducing adapter to the 2" opening.



Place filter media pad into the waterfall weir.



Fill the mesh bag with rocks for ballast. Use large gravel, lava rock or stones.



Place mesh bag on top of media.



Add Savio natural Beneficial Bacteria to the filter media during start-up.

# Installation Options

Multiple Waterfall Weirs™ may be used together to create interesting water features. Below are some examples.

## Larger Waterfalls

combine two or more waterfalls side by side for a larger waterfall



## Waterfall Cascade

place several waterfalls to create a waterfall cascade

# Maintenance

---

Under normal operating conditions this Waterfall Weir™ will provide years of trouble-free use. Only the filter media will require periodic maintenance:

## Cleaning Instructions

Check and clean filter media when the media appears dirty or when the flow of water decreases.

- 1) Shake media to dislodge debris.
- 2) Rinse media in a bucket of pond water. **Avoid using tap water, chlorinated water, soaps or chemicals as this can kill the beneficial organisms living on the media.**

## Beneficial Bacteria

Add SAVIO Natural Beneficial Bacteria to the filter mat during startup, and after each cleaning throughout the season.

## Winterization

---

Prepare for winterization in mid-to-late November, or when ice persistently develops on the pond. Keep equipment winterized until late February or early March when the water temperature rises to 40° F or higher consistently.

### If the pond is to be shut down in Winter:

- 1) Disconnect UV Clarifiers and store indoors.
- 2) Disconnect submersible pump, clean and store in a dry place.
- 3) Drain any plumbing lines not buried below frost line (18"-24" in agricultural zones 4-6).
- 4) Use plumber's heat tape on pipes and shut off valves. Insulate the pump house and exterior pumps and valves.
- 5) Remove and thoroughly clean filter mat.

# Troubleshooting

<b>Faults</b>	<b>Possible Causes</b>	<b>Remedies</b>
Waterfall weir chamber runs dry during operation.	Low water level in pond.  Pump inactive.	Add water to pond.  Restart Pump.

## Replacement Parts

<b>Code</b>	<b>Item</b>
RF021	Waterfall Weir™ Housing
RF019	Waterfall Weir™ Compression Seal
RF020	Waterfall Weir™ Mesh Bag
RF017	Waterfall Weir™ Filter Mat
RF018	Waterfall Weir™ Tack Screws

# Customer Service Information



**Savio Engineering, Inc.**

8 Water Garden Way

Santa Fe, NM 87508 USA

<http://www.savio.cc> • email: [support@savio.cc](mailto:support@savio.cc)

## Warranty (Send in the enclosed warranty card)

SAVIO Engineering, Inc. provides a manufacturer's limited warranty of 5 years from original purchase date. Warranty is non-transferable. Within the warranty period SAVIO will repair materials with manufacturing deficiencies at their discretion. This warranty does not cover any faults caused by improper use, installation and handling of the device or as a result of wear and tear. SAVIO Engineering, Inc. does not assume liability for consequential damage caused by the failure of the SAVIO Skimmerfilter™. Warranty is void if the product is not used in accordance with instructions. For warranty claims, please contact your dealership.

## Innovative, precision engineered solutions Advanced water gardening products for healthy, clean Livingponds.™



Skimmerfilters™



Livingponds Filters™



Pond Packages™



Ultraviolet Clarifiers



Water Master Pumps™



Automated Water Level Sensor™



Springflo Bio Filter Media™



Greenex® Micro Granules™



Aqua Flex PVC™



Black Foam



Water Treatments