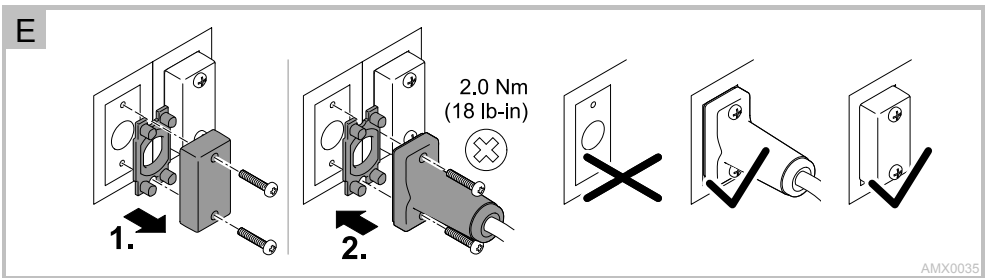
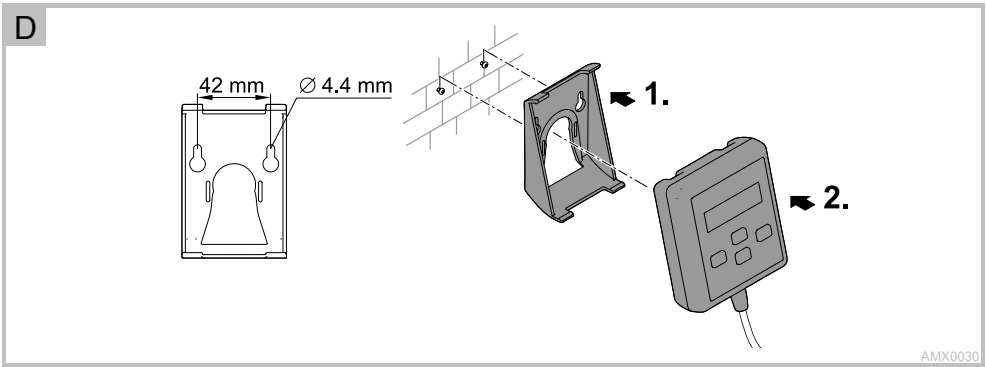
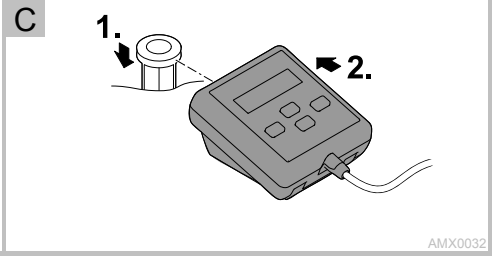
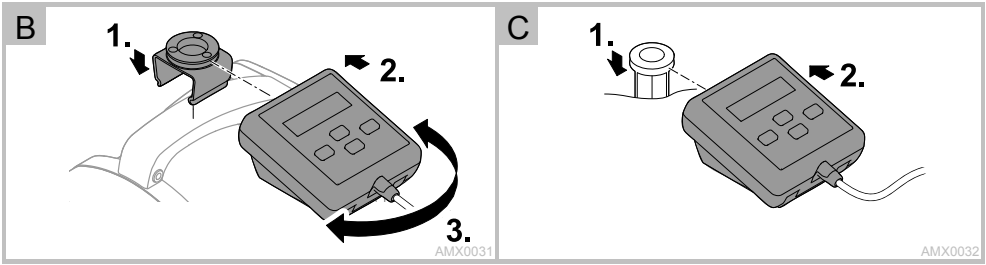
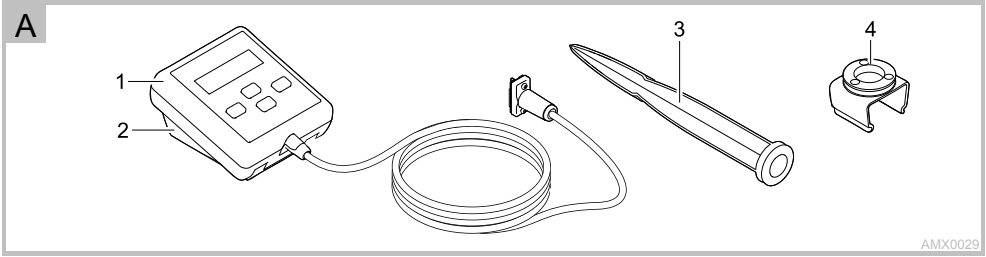




## ECO CONTROL

- EN Operating instructions
- FR Notice d'emploi
- ES Instrucciones de uso





## **WARNING**

- This unit can be used by children aged 8 and above and by persons with reduced physical, sensory or mental capabilities or lack of experience and knowledge if they are supervised or have been instructed on how to use the unit in a safe way and they understand the hazards involved.
- Do not allow children to play with the unit.
- Only allow children to carry out cleaning and user maintenance under supervision.
- Possible death or severe injury from electrocution! Before reaching into the water, always disconnect all units in the water that have a voltage of >12 V AC or >30 V DC from the power supply.

### **Safety information**

#### **Electrical connection**

- Electrical installations must meet the national regulations and may only be carried out by a qualified electrician.
- A person is regarded as a qualified electrician if, due to his/her vocational education, knowledge and experience, he or she is capable of and authorised to judge and carry out the work commissioned to him/her. This also includes the recognition of possible hazards and the adherence to the pertinent regional and national standards, rules and regulations.
- For your own safety, please consult a qualified electrician.
- The device may only be connected if the electrical data of the device and the power supply coincide. The device data is to be found on the device type plate, on the packaging or in this manual.

#### **Safe operation**

- Never operate the unit if an electrical cable is defective!
- Never operate the unit if the housing is defective!
- Never carry or pull the unit by the electrical cable.
- Route cables such that they are protected from damage and do not present a tripping hazard.
- Only open the unit housing or its attendant components if this is explicitly specified in the operating instructions.
- Only carry out work on the unit that is described in this manual. If problems cannot be overcome, please contact an authorised customer service point or, if in doubt, the manufacturer.
- Never carry out technical changes to the unit.
- Only use original spare parts and accessories for the unit.

## Information about these operating instructions

Welcome to OASE Living Water. You made a good choice with the purchase of this product **Eco Control**.

Prior to commissioning the unit, please read the instructions of use carefully and fully familiarise yourself with the unit. Ensure that all work on and with this unit is only carried out in accordance with these instructions.

Adhere to the safety information for the correct and safe use of the unit.

Keep these instructions in a safe place! Please also hand over the instructions when passing the unit on to a new owner.

### Symbols used in these instructions

The warning information is categorised by signal words, which indicate the extent of the hazard.



#### WARNING

- Indicates a possibly hazardous situation.
- Non-observance may lead to death or serious injuries.



#### NOTE

Information for the purpose of clarification or for preventing possible damage to assets or to the environment.

## Scope of delivery

<input type="checkbox"/> A	Description
1	AquaMax Eco Control
2	Retaining frame for fastening the device to the wall, or for fitting it to the ground stake or holding clip
3	Ground stake
4	Holding clip for fastening the device to the pump handle

## Product Description

Eco Control can be used to control EGC-capable OASE pumps.

Features:

- Connection to the EGC socket of the pump.
- Illuminated display.
- Does not require a separate power supply.
- Control of the pump capacity, switching the Seasonal Function Control (SFC) and Dynamic Function Control (DFC) on or off, selection of programmes.
- Allows display of the pump status and malfunctions.

### Intended use

Eco Control, referred to as "unit", may only be used as specified in the following:

- Connection to OASE pumps with EGC connection, that are suitable for control via this device.
- Operation under observance of the technical data.

## Installation and connection

### Fastening the device to the pump

How to proceed:

B

1. Fit the holding clip onto the pump handle.
2. Slide the device onto the holding clip.
3. Align the device.

### Installing the device with the ground stake

How to proceed:

C

1. Fully insert the ground stake into the ground.
2. Slide the device onto the ground stake.
3. Check its stability.

### Fastening the device to the wall

How to proceed:

□ D

1. Remove the retaining frame and fasten it to the wall using suitable screws.
2. Fit the device into the retaining frame.
  - Ensure that the device is properly engaged in the retaining frame.

### Connect the unit

How to proceed:

□ E

1. Remove the protection cap from the unit.
2. Fit the plug connector and secure with the two screws (max. 2.0 Nm).
  - Ensure that the rubber seal is clean and fits exactly.
  - Replace the rubber seal if damaged.
  - Only connect the plug to the left-hand EGC socket.



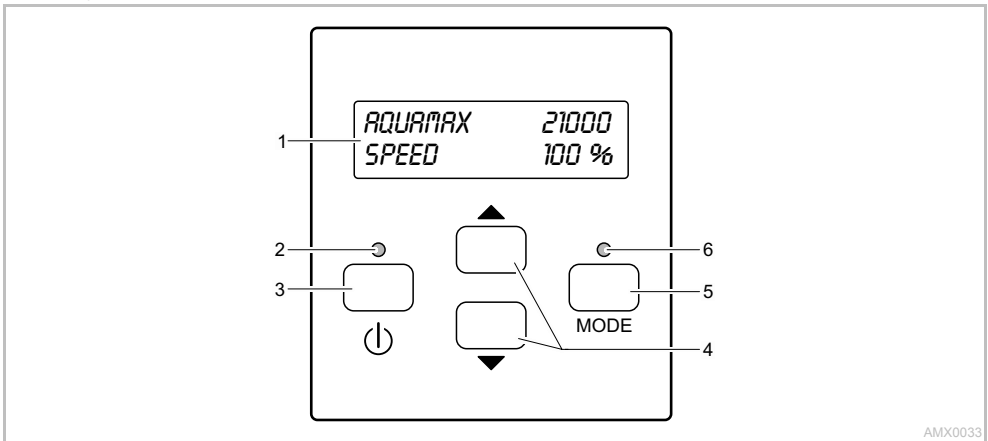
### NOTE

The device will be destroyed if water penetrates the EGC sockets.

- Close the EGC sockets with EGC plugs or a protection cap.

## Operation

### Control system overview



AMX0033

### Description

- 1 Two-line display with backlighting
- 2 LED ON/OFF
- 3 ON/OFF button
- 4 Arrow keys
- 5 Mode button
- 6 LED MODE

### Function

- Indicates whether the pump is switched on or off.
- For switching the pump on or off.
- For changing values in the menus or selecting other lines in the menu.
- For selecting the next menu in the display.  
The selection is continuous. It continues from the last menu to the first menu.
- Indicates the pump status.

**Status displays**

The LEDs signal the following statuses:

LED	Status	Description
LED ON/OFF	Green	The pump is switched on.
	Off	The pump is switched off.
LED MODE	Green	Seasonal Function Control (SFC) and/or Dynamic Function Control (DFC) is activated
	Red flashing	Malfunction (→ Error messages)
	Off	SFC and/or DFC is deactivated

**Menu: AquaMax Eco Expert / AquaMax Eco Titanium pump**

When the AquaMax Eco Expert pump is connected, the following menus and setting possibilities are available.



AQUAMAX 21000	PUMP	OFF
---------------	------	-----

**Description**

- Connected pump (e.g. AquaMax Eco Expert 21000)
- The pump is switched off.

Setting

- Switch on the pump via the ON/OFF button.



AQUAMAX 21000	SPEED	100 %
AQUAMAX 21000	SFC MODE	MAX

- Connected pump (e.g. AquaMax Eco Expert 21000)
- The pump is switched on.

Operating modes

- **SPEED:** The speed is shown as a percentage (SFC is deactivated).
- **SFC MODE:** SFC is activated (it is not possible to adjust the speed).
  - SFC mode (MIN, MID, MAX)

Adjustment (only for **SPEED**)

- Change the speed using the arrow keys.
- 0 %: Min. speed, 100 %: Max. speed

SFC	ON
SFC MODE	MID

Only display

- **SFC** (Seasonal Flow Control)
  - ON: Activated
  - OFF: Deactivated
- **SFC MODE** (MIN, MID, MAX)
  - SFC deactivated: No display
- Select the next display using the arrow keys.

POWER	250 W
RPM	2300 /MIN

Only display

- Current power consumption of the pump in watts
  - Display precision: ±5 % of the max. pump capacity
- Current speed of the pump in rpm
- Select next/previous display using the arrow keys.

RUNTIME	45 H
SN	1234567890

Only display

- Total pump operating time in hours
- Pump serial number

SET SFC	→ ON
	OFF

- SFC is switched on.

Setting

- Switch off SFC using the arrow key.

SET SFC	ON
	→ OFF

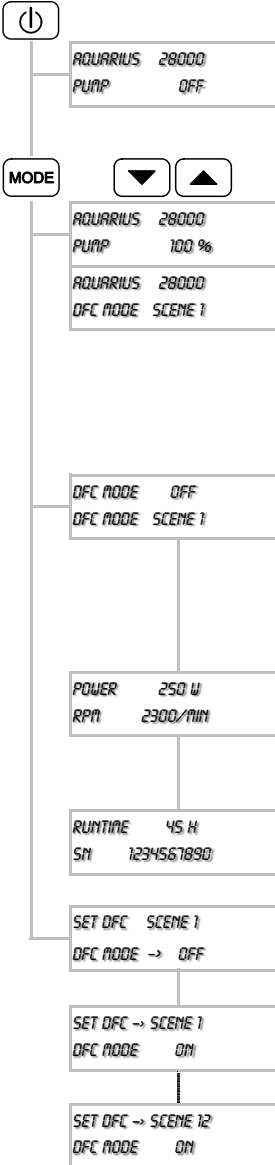
- SFC is switched off.

Setting

- Switch on SFC using the arrow key.

**Menu: Aquarius Eco Expert pump**

When the Aquarius Eco Expert pump is connected, the following menus and setting possibilities are available.



**Description**

- Connected pump (e.g. Aquarius 28000)
- The pump is switched off.

Setting

- Switch on the pump via the ON/OFF button.

- Connected pump (e.g. Aquarius 28000)
- The pump is switched on.

Operating modes

- **SPEED**: The speed is shown as a percentage (DFC is deactivated).
- **DFC MODE**: DFC is activated (it is not possible to adjust the speed).
  - DFC mode (SCENE 1 ... SCENE 12)

Adjustment (only for **SPEED**)

- Change the speed using the arrow keys.
- 0 %: Min. speed, 100 %: Max. speed

Only display

- **DFC** (Seasonal Flow Control)
  - **ON**: Activated
  - **OFF**: Deactivated
- **DFC-MODE** (SCENE 1 ... SCENE 12)
  - DFC deactivated: No display
- Select the next display using the arrow keys.

Only display

- Current power consumption of the pump in watts
  - Display precision: ±5 % of the max. pump capacity
- Current speed of the pump in rpm
- Select next/previous display using the arrow keys.

Only display

- Total pump operating time in hours
- Pump serial number

- DFC is switched off.

Setting

- Switch on DFC

- DFC is switched on, program 1 is selected

Setting

- Program selection (SCENE 1 ... SCENE 12) and switching DFC off using the arrow keys

### Error messages

Once a malfunction has been remedied, the error message automatically disappears.

Error message	Cause	Remedy
<i>WARNING</i> NO WATER	The pump has run dry (dry run protection has tripped).	<ul style="list-style-type: none"><li>- Flood the pump.</li><li>- Fully submerge the pump for operation in a pond.</li><li>- Vent the supply line.</li><li>- Remove any blockage from the supply line.</li></ul>
	Filter housing clogged (dry run protection has tripped).	Clean the pump.
<i>WARNING</i> MOTOR BLOCKED	Impeller unit is blocked (dry run protection has tripped).	Disconnect the power supply and remove obstacle. Then switch the pump on again.
<i>WARNING</i> HIGH TEMPERATURE	Ambient temperature for dry installation is too high.	<ul style="list-style-type: none"><li>- Avoid exposure to direct sunlight.</li><li>- Note maximum water temperature of +35°C.</li></ul>
	Water temperature too high	Note maximum water temperature of +35°C.
<i>WARNING</i> HIGH POWER	Current consumption too high <ul style="list-style-type: none"><li>- Impeller unit running sluggishly</li><li>- Excessively soiled water</li></ul>	Clean the pump.

### Storage/overwintering

The unit is frost-proof to -20 °C. If lower temperatures are expected, the unit must be removed and put into storage.

How to correctly store the unit:

- Protect the EGC plug from moisture and dirt.

### Wear parts

The following components are wear parts and are excluded from the warranty:

- EGC plug seal

### Disposal



#### NOTE

Do not dispose of this unit with domestic waste.

- Render the unit unusable beforehand by cutting the cables and dispose of the unit via the return system provided for this purpose.

### Spare parts

The use of original parts from OASE ensures continued safe and reliable operation of the unit.

Please visit our website for spare parts drawings and spare parts.



[www.oase-livingwater.com/spareparts](http://www.oase-livingwater.com/spareparts)





OASE GmbH · [www.oase-livingwater.com](http://www.oase-livingwater.com)

Tecklenburger Straße 161 · 48477 Hörstel · Postfach 20 69 · 48469 Hörstel · Germany

CE

48626/10-16